

Low carbon vision:

Moving towards a low carbon economy by exploring various innovative technological solutions and integrating them into city level activities to ensure the better delivery of services to the citizens of Thane city.

Final energy consumption in the community:

7,895,164 GJ (2007-2008)

GHG emissions from the community:

1,252,120 tCO₂e (2007-2008)

Main economic activity:

Secondary Sector – Industry, Manufacturing, Metalworking Industry, Vehicles, Electrical Equipment, Chemicals, Food, Paper.

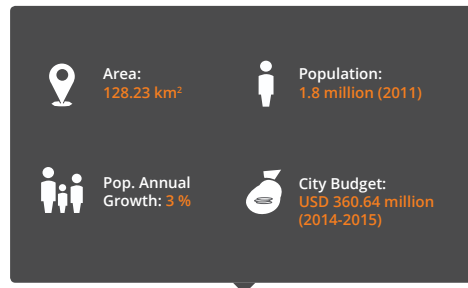
Main priority sectors for Low Emission

Urban Development:

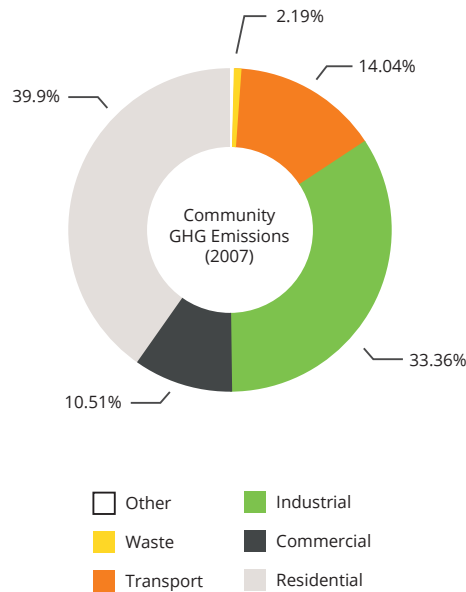
Thane City has been a pioneer in taking innovative steps towards low carbon development and has taken part in many of the international and national projects. The key areas where the city has introduced interventions are renewable energy and energy efficiency in buildings; street lighting; water supply; waste to energy. Implementation of the solar city program is a priority, with energy efficiency, net metering based renewable energy power plants, light emitting diode (LED) street lighting, energy efficiency in water supply, and waste-to-energy plants identified as action areas.

Commitments:

Participating in the national “Development of solar cities program”, the city is committed to reduce projected conventional energy demand by 10% by 2013 in the period 2008-2013. In addition, the local government set a renewable energy target of 6% reduction by 2015 (from 2011) for community-based emissions and the energy efficiency target of 7% by 2015 (from 2010) for the community.



GHG inventory:



LED actions enabled by the Urban-LEDS project :

Energy-efficient street lighting

Recently the city completed its first GHG inventory. In addition to this, an energy service company (ESCO) has been engaged to audit 10,000 of the 70,000 street lights in Thane and outline financial plans for implementation. This mitigation activity will improve illumination levels, large-scale energy efficiency and system modernization for better operation and maintenance of street lighting, reducing costs of the local government.

Green building policy and municipal drivers training

Some other highlights of a few ongoing activities are: the development of a local green building policy. To support this, a background study and data collection have been conducted. An existing building approval process has been documented to support this work. Moreover, a municipal driver training program is currently under development – training drivers of the municipal transport system on good driving practice to optimize fuel efficiency and consequently reduce emissions. The training will be provided by the Petroleum Conservation and Research Association.

Further engagements:

- Reporting in the carbonn Climate Registry (www.carbonn.org)
- Earth Hour City Challenge participant (2014)
- GHG inventory is compliant with the Global Protocol on Community-Scale Gas Emissions (GPC)



“Thane Municipal Corporation has been a pioneer in taking initiatives to combat climate change issues. Participation in the Urban-LEDS project is a unique opportunity for Thane city, and it is committed to active participation in the project so as to reap the potential benefits available to the city.”

**Sanjay Bhaurav More,
Mayor of Thane**

