

# Model City Steve Tshwete Municipality

## Low carbon vision:

To be the best community-driven Local Municipality in the world in the provision of sustainable services and developmental programs.

In 2030, Steve Tshwete is an integrated, harmonious and green locality. We are an empowered, prospering community surrounded by air that is natural and fresh, and enjoying water that is crystal clear, safe and clean. (Draft vision derived from the low-emission development scenario process during Urban-LEDS).

## Final energy consumption in the community:

19,810,709 GJ (2012)

## GHG emissions from the community:

3,773,288 tCO<sub>2</sub>e (2012)

## Main economic activity:

Coal Mining and Manufacturing.

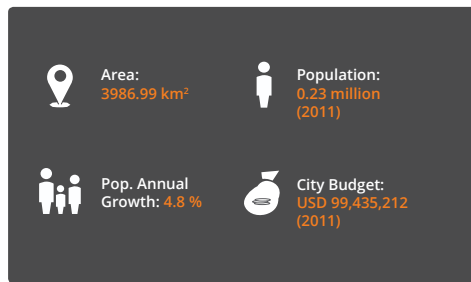
## Main priority sectors for Low Emission

### Urban Development:

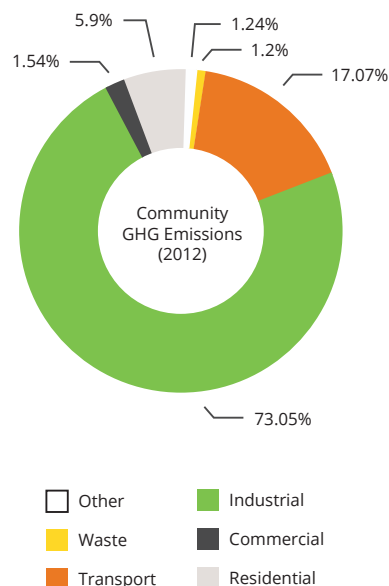
Energy Efficiency, Community Engagement, Integrated Planning, Green Building (Spatial Planning).

## Commitments:

The city signed the committed to the 'Durban Commitment: Local Governments for Biodiversity' and 'Cleanest Municipality competition' (National and Provincial).



## GHG inventory established in project:



## LED actions enabled by the Urban-LEDS project :

### Greenhouse gas inventory conducted as baseline study using 2012 data

Aim of the inventory is to understand how much the different sectors contribute to local emissions in order to inform prioritization and planning. Figures were included in the annual review of the statutory municipal Integrated Development Plan. The data for 2012 has been completed and an infographic has been created to communicate results to the wider community.

### Participatory scenario planning process

This process was intended to use the future scenario planning to craft a 2030 vision and objectives with municipal staff and stakeholders. In the course of the last year scenarios have been created with a preferred vision and underlying objectives. Currently these are being reviewed by external experts.

### Green Building learning exchange

The learning exchange was geared towards providing model cities with a peer-to-peer exchange on green building policy design linked to wider sustainable development strategies and policies. The exchange was done with the City of Tshwane which consequently implemented a green building by-law.

### Action planning workshop

The workshop is to engage with internal and external stakeholders to discuss and decide on short and medium term projects to help achieve the 2030 vision. Initial actions have been identified and the final action plan is under development.

### Green building policy development

The development of a policy and implementation plan to encourage compliance with green building criteria in new developments is planned to commence in 2015.

### Roll-out of resource efficiency service package for local leaders/ prominent local buildings

If approved, the roll-out will start in 2015 and aims at demonstrating local leadership and reducing energy poverty through a visible retrofit project.

### Energy audit and potential associated implementation measures for municipal water infrastructure

With the goal of reducing energy and water usage associated with the municipal water infrastructure, this is planned for 2015, upon approvals.

## Further engagements:

- Reporting in the carbonn Climate Registry (carbonn.org)
- GHG inventory compliant with the Global Protocol on Community-Scale Gas Emissions (GPC)



*"We now realize that we have a coal-based economy, that we need to think beyond 2030, and must start preparing ourselves for the end of (coal) mining. We have a preparedness to learn and understand these matters of low emission development. I believe that leadership by example is the best kind of leadership."*

**Councillor Mike Masina,  
Executive Mayor  
of Steve Tshwete  
Municipality**

