

Model City Recife

Low carbon vision:

The city is committed to be a model of social and economic development based on sustainability. To this end Recife has developed a Municipal Policy on Climate Change and Sustainability to guide actions on sustainability and climate change mitigation and adaptation. These activities are part of its Current Government Program (2013-2016). Recife aims to be a leader in the Brazilian North-eastern region.

Final energy consumption in the community:

Data available only for electricity consumption (per inhabitant): 2.794.880 Mwh (2007)

GHG emissions from the community:

3.115.341 tCO₂e (2012)

Main economic activity:

Industry, Services, Fishery, Tourism

Main priority sectors for Low Emission

Urban Development:

Transport/ Mobility, Urban Planning/Spatial Development, Green Spaces, Waste, Buildings

Commitments:

The city is in the process of analyzing data in order to set specific commitments based on factual information from the GHG inventory.

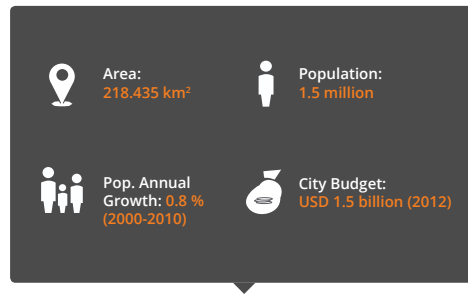
LED actions enabled by the Urban-LEDS project :

The Municipal Integrated Waste Management Plan

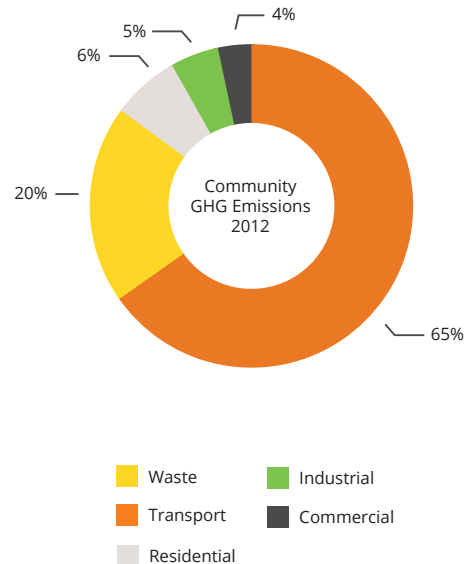
The Recife Metropolitan Region produces 4,982.30 tons of waste per day, of which almost 100% is sent to a landfill. Only 0.17% of the waste produced is being recycled. To overcome the problems regarding waste management, the City of Recife has developed the Municipal Integrated Waste Management Plan and implemented a campaign to collect electronic waste. To reduce emissions by decreasing the amount of waste sent to landfills, the implementation of waste separation and recycling systems is being explored in the Urban-LEDS project – a first initiative recently decided on, is to start a domestic composting program in 2015.

Public LED Lighting and Biofuel for the Municipal Fleet

Recently, Recife also selected a pilot area in the historical center for replacing conventional light bulbs with light emitting diodes (LED) lighting to save energy. It is planned



GHG inventory established in project:



Brazil

www2.recife.pe.gov.br

to extend this later to public spaces and buildings. The Urban-LEDS project has supported the city to make this a priority action, leading to an investment of USD 1.7 million. The overall goal is to save 50% to 70% in energy consumption in this pilot area and then to replicate this approach in other areas of the city. Some traffic lights were also substituted. In the near future, the city plans to make its municipal fleet more sustainable by replacing gasoline with ethanol (biofuel). Recife will also be the first city in Brazil to have an electric car sharing scheme in partnership with the State Government.

Carbon sinks

Recife's afforestation is among the priorities of the urban and environmental development policy. The presence of trees in the city is important to maintain the ecological balance. 6,716 trees will be planted in 451 Streets in 8 neighborhoods.

Creation of bus corridors (North/South and East/West)

These exclusive corridors will improve passenger transport flow in Recife and to other cities in the Metropolitan Region. Recife is the third Brazilian Capital and the sixth city in the world where most time is lost in traffic, which compromises the quality of life. Citizens will regain 3 hours of their day, once it operates. Implementation support comes from an urban planner from the International Society of City and Regional Planners (ISOCARP).

Increase of bike lanes in the city

Recife is a flat city with beautiful landscapes. The majority of the population did not have dedicated bike lanes. Mayor Geraldo Júlio authorized the use of bike lanes, using streets especially on weekends when car access is restricted.

Capibaribe River Navigability Project

Boats to transport passengers is explored as an additional transport option on 2 routes – at an average speed of 18km/h – respectively covering 11 km (western route) and 2.9 km (northern route). Stations for arrival and departure are to be linked to the metropolitan transport system. This will allow passengers to use their ticket in the whole public transport. The new system will attend eighty thousand passengers per month.

Sustainable Construction Code Recife has recently adopted a code and certification for sustainable construction.

Further engagements:

- Reporting in the carbonn Climate Registry (www.carbonn.org)
- Earth Hour City Challenge participant (2014)
- GHG inventory is compliant with the Global Protocol on Community-Scale Gas Emissions (GPC)



"We have made the commitment to a social and economic model structured on a sustainable basis. The Urban-LEDS initiative is a key factor in helping us to meet our targets."

**Geraldo Júlio,
Mayor of Recife**

